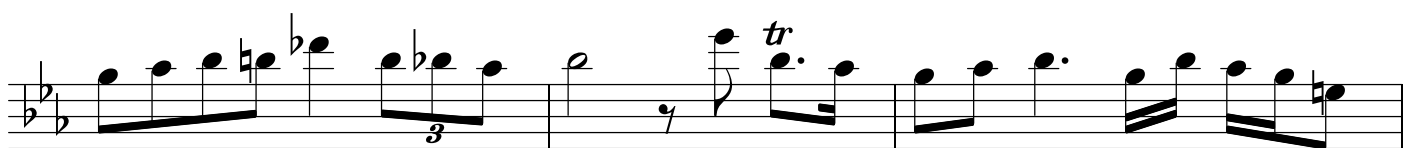
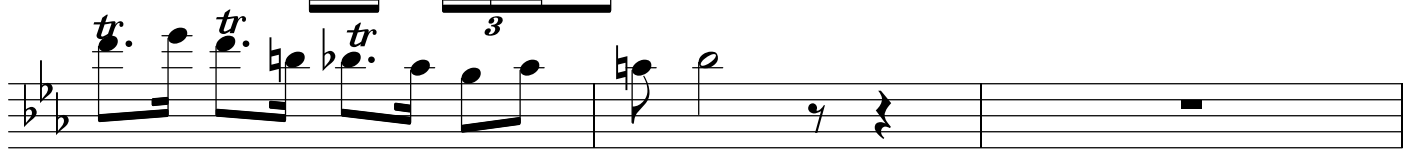
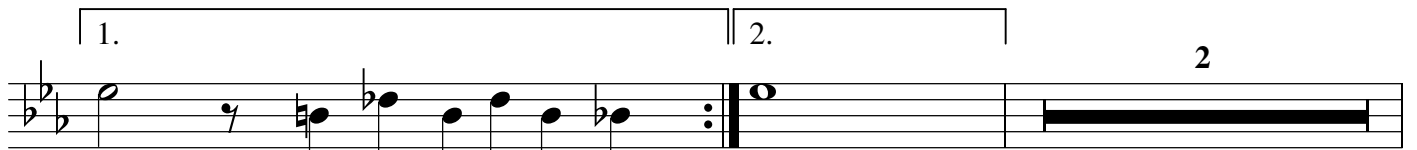
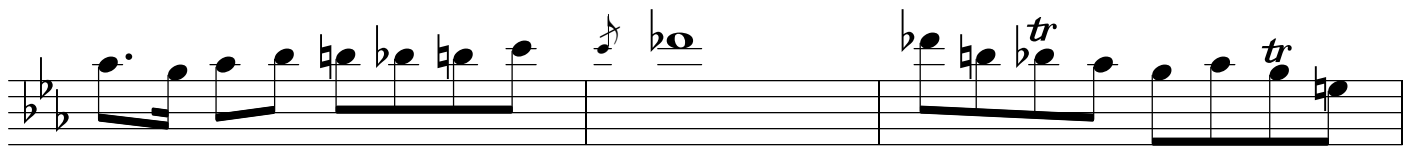


Sher

(Arrangement by R.Lankios)

♩ = 142 4

The musical score for 'Sher' is presented in ten staves. The first staff is in treble clef with a 3/4 time signature. The key signature has two flats (B-flat and E-flat). The tempo is marked as quarter note = 142. The first staff contains a whole rest followed by a melodic line. The second staff is in bass clef and features several trills (tr.) and triplet markings (3). The third staff continues the bass line with more trills and triplets. The fourth staff has a triplet of eighth notes. The fifth staff features a trill. The sixth staff has two trills. The seventh staff continues the melodic line. The eighth staff has a trill. The ninth staff shows a change in time signature to 4/4, indicated by a double bar line and the new signature. The final staff concludes with a triplet of eighth notes.



This page of musical notation is for a piece in B-flat major, indicated by two flats in the key signature. The music is written on a single staff and includes the following elements:

- Measures 1-4:** A melodic line starting with a quarter note, followed by eighth notes, and ending with a triplet of eighth notes.
- Measures 5-8:** A section marked with a repeat sign. It begins with a trill (tr.) on a quarter note, followed by eighth notes and a triplet of eighth notes.
- Measures 9-12:** Continuation of the melodic line with eighth notes and a triplet of eighth notes.
- Measures 13-16:** A section with first and second endings. The first ending leads back to an earlier part of the piece, while the second ending concludes the section.
- Measures 17-20:** A melodic line featuring a half note, quarter notes, and a triplet of eighth notes.
- Measures 21-24:** A melodic line with eighth notes and a triplet of eighth notes.
- Measures 25-28:** A section with a trill (tr.) on a quarter note, followed by eighth notes and a triplet of eighth notes.
- Measures 29-32:** A melodic line with eighth notes and a triplet of eighth notes.
- Measures 33-36:** A section with first and second endings, similar to the earlier section.
- Measures 37-40:** A melodic line with eighth notes and a triplet of eighth notes.

The image displays a musical score for a piece in B-flat major, consisting of five staves. The first staff contains the main melody, which begins with a trill on the first note and includes triplet figures. The second staff features a first ending (marked '1.') and a second ending (marked '2.'). The third and fourth staves continue the melodic line with various ornaments and triplet patterns. The fifth staff shows a bass line with sustained notes and rests, providing harmonic support for the melody.